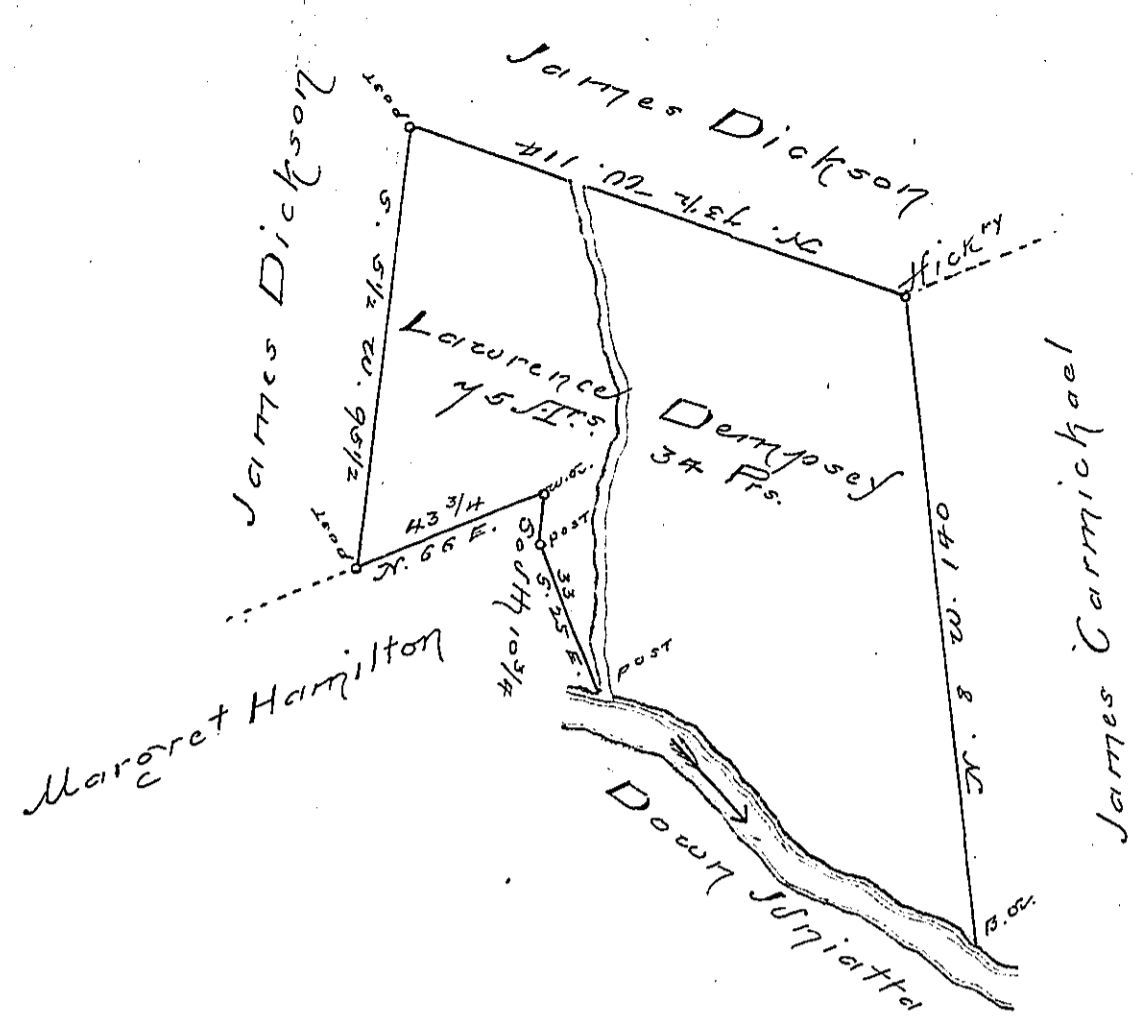


Cads & dist
down the River
S. 70 E. 20
S. 45 E. 32
S. 65 E. 42
S. 38 E. 8



A Draught of a tract of land Situated in Wayne township Mifflin County containing Seventy five acres & 34 perches & the allowance of Six p. Cent for Roads &c.

Survey'd for Lawrence Dempsey Feb^y. 5th 1796 in pursuance of a Warrant dated the 17th December 1795.

Note L Dempseys W^t was for only 50^{ac}. but the survey includuigh his house & improvements & there being no disputes I beg leave to submit it you to be accepted or not.

To Daniel Brodhead Esq^r
Suro: Genl.

James Harris S.S

IN TESTIMONY that the above is a copy of the original remaining on file in the Department of Internal Affairs of Pennsylvania, made conformably to an Act of Assembly approved the 16th day of February, 1833. I have hereunto set my Hand and caused the Seal of said Department to be affixed at Harrisburg, this

fourth day of August 1896.

James W. Pitts
Secretary of Internal Affairs.